



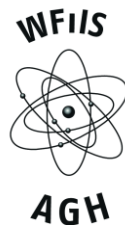
## **The International Scientific Conference**

**”Challenges in Applied Geology and Geophysics:  
100<sup>th</sup> Anniversary of Applied Geology  
at AGH University of Science and Technology”  
(CAGG-AGH-2019)**

**10<sup>th</sup>-13<sup>th</sup> September, 2019**

**Kraków – Poland**

### **PROGRAMME**



**THE CONFERENCE IS ORGANIZED UNDER THE AUSPICES OF:**



**Hon. Jarosław Gowin** - Deputy Prime Minister, Minister of Science and Higher Education



**Hon. Piotr Dziadzi** - Chief National Geologist and Government Plenipotentiary for State Raw Materials Policy



**Piotr Ćwik** – Governor of the Malopolska Region



**Prof. Jacek Majchrowski** – Mayor of the City of Kraków

**PLATINIUM PARTNER**



**SPONSORS**



## 10<sup>TH</sup> SEPTEMBER (TUESDAY)

16.00–20.00     **Registration**

18.00–20.00     **Icebreaker Reception**

## 11<sup>TH</sup> SEPTEMBER (WEDNESDAY)

8.00–10.30     **Registration**

10.30–11.00	<b>Opening Ceremony – Blg. A-0, AULA</b>
<b>Plenary Session (Keynote speakers) – Blg. A-0, AULA</b>	
11.00–11.30	<b>Prof. Dr. Rolf Bracke</b> <i>Bochum University of Applied Sciences, Ruhr-University Bochum, International Geothermal Centre (GZB)</i> From Coal Mining to Heat Mining - Perspectives of value creation for the most venerable European industry
11.30–12.00	<b>Prof. Dr. Mihaly Dobroka</b> <i>University of Miskolc</i> Method developments in geophysical inversion
12.00–12.20	<i>Coffee break + group photo (stairs in the main hall)</i>
<b>Plenary Session (Keynote speakers) – Blg. A-0, AULA</b>	
12.20–12.50	<b>Prof. Dr. Bernd Lehmann</b> <i>Technical University of Clausthal</i> Metallogeny of tin - revisited
12.50–13.20	<b>Prof. Dr. Ralf Littke</b> <i>RWTH Aachen University</i> Coal-bearing Basins in Germany: deposition, temperature history and natural gas generation
13.20–13.50	<b>Prof. Dr. Hirochika Sumino</b> <i>University of Tokyo</i> Noble gas and halogen heterogeneity in the subcontinental lithospheric mantle
13.50–15.00	<b>Lunch</b>

<b>Session: Renewable Energy (RE) - Blg. A-0, room 133</b>		<b>Session: Applied Geophysics (AG1) – Blg. A-0, room 213</b>
<i>In Chair: Prof. Rolf Bracke Prof. Barbara Tomaszewska</i>		<i>In Chair: Prof. Mihaly Dobroka Prof. Urszula Woźnicka</i>
15.00–15.20	<b>GEOLOGICAL CONDITIONS OF GEOTHERMAL RESOURCES OCCURRENCE IN POLAND</b> Anna Sowizdżał, Wojciech Górecki, Marek Hajto	<b>SIMPLE 2D GRAVITY - DENSITY INVERSION FOR THE MODELING OF THE SEDIMENTARY BASIN BASEMENT</b> Ivana Vasiljević, Snežana Ignjatović, Dragana Đurić
15.20–15.40	<b>RESULTS OF NUMERICAL MODELING OF THE LOWER JURASSIC GEOTHERMAL RESERVOIR PARAMETERS DISTRIBUTION IN THE CENTRAL PART OF POLISH LOWLANDS USING GEOPHYSICAL METHODS</b> Anna Wachowicz-Pyzik, Anna Sowizdżał, Tomasz Maćkowski, Michał Stefaniuk	<b>MULTI-METHOD GEOPHYSICAL CHARACTERIZATION OF THE SHAPE OF THE PERMAFROST IN THE HIGH ARCTIC (SPITSBERGEN)</b> Artur Marciniak, Bartosz Owoc, Marzena Osuch, Tomasz Wawrzyniak, Adam Nawrot, Wojciech Dobiński, Mariusz Majdański
15.40–16.00	<b>ANALYSIS OF THE POSSIBILITY OF USING CO<sub>2</sub> AS A WORKING FLUID IN UNCONVENTIONAL GEOTHERMAL SYSTEMS IN POLAND</b> Leszek Pająk, Anna Sowizdżał, Paweł Gładysz	<b>OPTIMISING 4D SEISMIC WITH EVOLVING TECHNOLOGY OVER 20 YEARS OF RESERVOIR MONITORING OF THE GULLFAKS FIELD, NORTH SEA</b> Marta Wierzchowska, Darryl Anderson
16.00–16.20	<b>VARIABILITY OF THERMAL CONDUCTIVITY - PRELIMINARY STUDY OF KRAKÓW AREA (GEOPLASMA-CE)</b> Marek Hajto, Bartłomiej Ciapała, Gabriel Ząbek, Bartosz Papiernik	<b>APPLICATION OF GPR AND SEISMIC METHODS FOR NONINVASIVE EXAMINATION OF GLACIAL AND POSTGLACIAL SEDIMENT IN THE PSIA TRAWKA GLADE AND THE SUCHA WODA VALLEY - THE TATRA MTS., POLAND</b> Sylvia Tomecka-Suchoń, Tomisław Gołębiowski, Jerzy Dec, Janusz Magiera
16.20–16.40	<i>Coffee break</i>	
<b>Session: Mineral and Energy Resources (MER1) - Blg. A-0, room 133</b>		<b>Session: Applied Geophysics (AG2) – Blg. A-0, room 213</b>
<i>In Chair: Prof. Bernd Lehmann Prof. Adam Piestrzyński</i>		<i>In Chair: Prof. Ivana Vasiljevic Prof. Michał Stefaniuk</i>
16.40–17.00	<b>METALLOGENIC POTENTIAL OF THE DEEP SEA MINERAL DEPOSITS</b> Ryszard Kotliński, Adam Piestrzyński	<b>EPISODIC OCCURRENCE, STRONG EARTHQUAKE CLUSTERING AND FAULT SYNCHRONISATION AS REVEALED THROUGH STRESS TRANSFER MODELS</b> Eleftheria Papadimitriou, Vassilios Karakostas

17.00–17.20	<p style="text-align: center;"><b>GOLD - SULPHIDE MINERALISATION OF RUDNY ALTAY (KAZAKHSTAN)</b></p> <p style="text-align: center;"><b>Anna Pyatkova</b>, Arkady Mizerny, Anastasiya Miroshnikova, Marina Mizernaya, Gulnur Nurshyikova, Aseel Akilbaeva, Zinaida Chernenko</p>	<p style="text-align: center;"><b>EVOLUTION OF SEISMICITY IN CENTRAL IONIAN ISLANDS, GREECE: IMPLICATIONS OF RECENT SEISMIC SEQUENCES FOR GEODYNAMIC PROPERTIES AND SEISMIC HAZARD ASSESSMENT</b></p> <p style="text-align: center;"><b>Vassilios Karakostas</b>, Eleftheria Papadimitriou</p>
17.20–17.40	<p style="text-align: center;"><b>SILVER MINERALIZATION OF BARITE VEINS, BOGUSZÓW, POLAND</b></p> <p style="text-align: center;"><b>Sławomir Mederski</b>, Jaroslav Pršek, Žaneta Niemasz</p>	<p style="text-align: center;"><b>CROSS-CORRELATION ANALYSIS FOR TWO NON-STATIONARY TIME SERIES OF SEISMIC ACTIVITY BETWEEN EASTERN ALPS AND THE UPPER SILESIAN COAL BASIN</b></p> <p style="text-align: center;"><b>Agnieszka Braclawska</b>, Adam F. Idziak</p>
18.00–19.00	<p><i>Concert of the AGH-UST Representative Orchestra – Błg. U-2, 7 Reymonta Str.</i></p>	

## 12<sup>TH</sup> SEPTEMBER (THURSDAY)

<b>Session: Geochemical and Mineralogical Studies (GMS) - Blg. A-0, room 133</b>		<b>Session: Applied Geophysics (AG3) – Blg. A-0, room 213</b>
<i>In Chair: Prof. Hirochika Sumino Prof. Ryszard Kotliński</i>		<i>In Chair: Prof. Eleftheria Papadimitriou Prof. Mariusz Majdański</i>
9.00–9.20	<b>GOLD AND POLYMETALLIC MINERALIZATION IN THE BANDED IRON FORMATIONS DEPOSIT, KRYVYI RIH, UKRAINE</b> Anatoliy Berezovskyi, Jadwiga Pieczonka, Adam Piestrzyński	<b>SEISMIC METHODS IN MINERAL EXPLORATION: WHAT WE LEARNED FROM THE COGITO-MIN PROJECT?</b> Michał Malinowski, Emilia Koivisto, Suvi Heinonen, Calin Cosma, Marek Wojdyła, Sanna Juurela
9.20–9.40	<b>CAPILLARY CHARACTERISTICS AND SALTWATER PROPAGATION IN FINE AGGREGATE RELATED TO CLIMATE CHANGE INDUCED BY SEA LEVEL RISE</b> Truc Nguyen, Vu Bang, Vu Duc	<b>COMPARISON OF SEISMIC INTERFEROMETRY AND MULTICHANNEL ANALYSIS OF SURFACE WAVES FOR ESTIMATION OF S-WAVE VELOCITY IN LANDSLIDE COLLUVIUM</b> Paulina Harba, Zenon Pilecki, Krzysztof Krawiec
9.40–10.00	<b>TIMING OF ORE MINERALIZATION USING ORE MINERALOGY AND U-Pb DATING, IOCG SIN QUYEN DEPOSIT, NORTH VIETNAM</b> Jadwiga Pieczonka, Chau Nguyen Dinh, Adam Piestrzyński, Phon Khanh Le	<b>CHARACTERIZATION OF LITHOLOGY UNITS OF ISANLU SHEET 225, NORTH-CENTRAL NIGERIA USING AEROGEOPHYSICAL DATASETS</b> Akinniyi Akinsunmade, Anna Wojas, Chau Nguyen Dinh, Sylwia Tomecka-Suchoń
10.00–10.20	<b>TIME AS A CHALLENGING CONSTRAINT OF EXPERIMENTAL STUDIES IN APPLIED MINERALOGY OF APATITES</b> Justyna Topolska, Tomasz Bajda, Bartosz Puzio, Maciej Manecki, Gabriela Kozub-Budzyń	<b>APPLICATION OF GEOPHYSICAL METHODS FOR RECOGNISING OF GYPSUM DEPOSITS IN URBAN AREAS</b> Tomisław Gołębiowski, Elżbieta Jarosińska
10.20–10.50	<i>Coffee break</i>	
<b>Session: Geochemistry (G) - Blg. A-0, room 133</b>		<b>Session: Applied Geophysics (AG4) – Blg. A-0, room 213</b>
<i>In Chair: Prof. Ralf Littke Prof. Maciej J. Kotarba</i>		<i>In Chair: Prof. Bogdan Niculescu Prof. Jerzy Dec</i>
10.50–11.10	<b>ORIGIN OF MOLECULAR NITROGEN RELATED TO HYDROCARBONS OF NATURAL GAS OF CENTRAL AND EASTERN PARTS OF THE POLISH OUTER CARPATHIANS</b> Elżbieta Bilkiewicz, Maciej Kotarba	<b>ARCHAEOLOGICAL GEOPHYSICS INVESTIGATIONS OF THE VILLA DEGLI ANTONINI AND ROTA RIA ARCHAEOLOGICAL SITES</b> Klodian Skrame, Redi Muci, Oltion Fociro, Maria Di Nezza, Michele Di Filippo

11.10–11.30	<p><b>STUDIES ON NITROGEN COMPOUNDS, V AND Ni CONCENTRATIONS AND NITROGEN ISOTOPIC COMPOSITION OF THE CRUDE OILS OF CENTRAL AND EASTERN PARTS OF THE POLISH OUTER CARPATHIANS</b></p> <p>Krzysztof Jurek, Tomasz Romanowski, Dariusz Więclaw</p>	<p><b>DETAILED ANALYSIS OF THE GRAVITATIONAL EFFECTS CAUSED BY THE BUILDINGS IN MICROGRAVITY SURVEY</b></p> <p>Monika Łój, Sławomir Porzucek</p>
11.30–11.50	<p><b>HYBRID SUBCONVENTIONAL HYDROCARBON SYSTEM OF THE CARPATHIAN FOREDEEP (SE POLAND)</b></p> <p>Paweł Poprawa, Grzegorz Machowski, Jerzy Hadro, Bartosz Papiernik, Paweł Kosakowski, Szczepan Porębski, Mariusz Słyś, Andrzej Maksym</p>	<p><b>USE OF COMPLEX ANALYSIS OF GPR SIGNAL FOR THE DELINEATION OF SUBSURFACE SUBTLE FEATURES</b></p> <p>Akinniyi Akinsunmade, Sylwia Tomecka-Suchoń, Paweł Pysz</p>
11.50–12.10	<p><b>STABLE CARBON ISOTOPE COMPOSITION OF METHANE RELEASED TO THE ATMOSPHERE IN THE UPPER SILESIA COAL BASIN</b></p> <p>Mirosław Zimnoch, Maciej Kotarba, Kazimierz Różański, Jarosław Nęcki, Łukasz Chmura, Michał Gałkowski, Alina Kamińska-Jasek, Mila Stanisavlevic</p>	<p><b>GROUND PENETRATING RADAR IN THE TASK OF FLOOD PREVENTION</b></p> <p>Sylwia Tomecka-Suchoń</p>
12.10–12.30	<p><b>THE CARBONATE MINERALS IN SARMATIAN-BADENIAN SANDSTONES FROM CENTRAL PART OF THE CARPATIAN FOREDEEP (POLAND)</b></p> <p>Katarzyna Chruszcz-Lipska, Marek L. Solecki, Bartosz Trzewik, Michał Maruta, Joanna Wartak, Danuta Zagrajczuk</p>	<p><b>THE FEASIBILITY STUDY OF CSEM METHOD FOR PROSPECT HYDROCARBONS IN THE BALTIC SEA AREA</b></p> <p>Piotr Śliwiński, Helena Cygnar</p>
12.30–13.40	<i>Lunch</i>	
<b>Session: Mineral and Energy Resources (MER2) - Blg. A-0, room 133</b>		<b>Session: Applied Geophysics (AG5) – Blg. A-0, room 213</b>
<i>In Chair: Prof. Anatolyi Berezovskyi Prof. Henryk Sechman</i>		<i>In Chair: Prof. Vassilios Karakostas Prof. Sławomir Porzucek</i>
13.40–14.00	<p><b>RELATION BETWEEN SOME SELECTED MAJOR AND TRACE ELEMENTS IN THE IOCG SIN QUYEN DEPOSIT, LAO CAI PROVINCE, NORTH VIETNAM</b></p> <p>Duong Van Hao, Chau Nguyen Dinh, Adam Piestrzyński, Jadwiga Pieczonka</p>	<p><b>A COLLABORATIVE APPROACH OF REMOTE GEOSTEERING FOR AN OPTIMAL WELL PLACEMENT WITH HELP OF INTEGRATED REAL-TIME DATA</b></p> <p>Muhammad Attique Amer, Muhammad Kashif, Hamood Meraj</p>



14.00–14.20	<b>CEMENT AND FLY-ASH CHEMICAL STABILIZATION OF EXPANSIVE CLAY SOILS</b> Redi Muci, Oltion Fociro, Klodian Skrame	<b>USING VERTICAL ELECTRICAL SOUNDINGS TO CHARACTERIZE SEAWATER INTRUSIONS IN THE SOUTHERN AREA OF ROMANIAN BLACK SEA COASTLINE</b> Bogdan Mihai Niculescu, Gina Andrei
14.20–14.40	<b>A NEW MINERALS FROM KUPFERSCHIEFER TYPE DEPOSIT, SIEROSZOWICE MINE, POLAND</b> Jadwiga Pieczonka, Adam Piestrzyński, Władysław Zygo, Ariel Wojcieszek	<b>APPLICATION OF X-RAY FLUORESCENCE ANALYSIS TO LITHOLOGY INTERPRETATION AND GEOSTEERING IN THE ROTLIEGEND FORMATION</b> Urszula Zagórska, Rafał Skupio, Benedykt Kubik, Sylwia Kowalska, Krzysztof Wolański
14.40–15.00	<b>SYSTEM DESIGN FOR THE NATURAL DISASTER MANAGEMENT IN ALBANIA</b> Oltion Fociro, Klodian Skrame, Redi Muci	<b>ARTIFICIAL NEURAL NETWORK AS A TOOL FOR PATTERN RECOGNITION AND ELECTROFACIES ANALYSIS IN POLISH SHALE GAS FORMATIONS</b> Edyta Puskarczyk
15.00–15.20	<b>UNCONVENTIONAL OIL AND GAS ACCUMULATIONS IN THE LOWER PALAEOZOIC SHALE RESERVOIRS OF THE CENTRAL AND EASTERN EUROPE – A REVIEW</b> Paweł Poprawa	<b>FEASIBILITY STUDY OF ARTIFACTS APPEARING ON NEUTRON LOGGING CURVE NEAR THE BOUNDARY OF LAYERS</b> Urszula Wiącek, Urszula Woźnicka
15.20–15.40	<i>Coffee break</i>	
<b>Session: Hydrogeology (H) – Bldg. A-0, room 133</b>		<b>Session: Applied Geophysics (AG6) – Bldg. A-0, room 213</b>
<i>In Chair: Prof. Rein Vaikmäe Prof. Ewa Kmiecik</i>		<i>In Chair: Dr. Gina Andrei Prof. Chau Nguyen Dinh</i>
15.40–16.00	<b>DECIPHERING SPATIAL AND TEMPORAL PATTERNS OF NITRATE IN A GROUNDWATER-DOMINATED AGRICULTURAL CATCHMENT</b> Damian Zięba, Przemysław Wachniew, Dominika Bar-Michalczyk, Anna Żurek	<b>MICROSEISMICITY INDUCED BY HYDRAULIC FRACTURING IN SHALES: GEOMECHANICAL MODEL</b> Leo Eisner
16.00–16.20	<b>SELECTIVITY OF CONCENTRATE COMPOSITION DEPENDING ON THE APPLIED REVERSE OSMOSIS MEMBRANE</b> Barbara Tomaszewska, Magdalena Tyszer	<b>NEW ASPECTS OF THE APPLICATION OF ELECTROMAGNETIC METHODS TO PETROLEUM EXPLORATION, POLISH EXPERIENCES</b> Michał Stefaniuk, Adam Cygal
16.20–16.40	<b>REVIEW OF SOFTWARE FOR MODELING MIGRATION OF EMERGING CONTAMINANTS IN GROUNDWATER</b> Damian Pietrzak	<b>ASSESSING THE INFLUENCE OF THE SEISMIC ACQUISITION PARAMETERS ON SEISMIC DATA QUALITY – THE WIERZBICA 3D AGH SEISMIC EXPERIMENT</b> Jan Barmuta, Monika Korbecka, Justyna Sowińska-Botor, Wojciech Mastej, Krzysztof Dzwiniel, Arkadiusz Buniak
19.00–23.00	<i>Gala dinner - Manggha Japanese Art and Technology Museum, 26 Konopnickiej Str.</i>	

# 13<sup>TH</sup> SEPTEMBER (FRIDAY)

## 8.30–10.00 Poster session – Blg. A-0, 2<sup>nd</sup> floor

P1	<b>INTEGRATION OF MICROSEISMIC AND SEISMIC DATA</b> Andrzej Pasternacki, <b>Paweł Wandycz</b> , Eryk Świąch, Krzysztof Pieniądz, Tomasz Maćkowski
P2	<b>APPLICATION OF ENGINEERING GEOPHYSICAL SURVEY FOR DETECTING SUBSURFACE LITHOLOGY AND SMALL TECTONIC ZONES. EXAMPLE FROM TESTING PROFILE LOCATED NEAR WAŃKOWA OIL DEPOSITS</b> Michał Stefaniuk, <b>Adam Cygal</b> , Jakub Ważny, Marek Sada
P3	<b>VERIFICATION OF BRIGHT SPOTS IN THE PRESENCE OF THIN BEDS BY AVO AND SPECTRAL ANALYSIS IN MIOCENE SEDIMENTS OF CARPATHIAN FOREDEEP</b> <b>Kamil Cichostępski</b> , Anna Kwietniak, Jerzy Dec
P4	<b>3C SEISMIC DATA PROCESSING AND INTERPRETATION – A CASE STUDY FROM CARPATHIAN FOREDEEP BASIN</b> <b>Żaneta Szymańska-Malysa</b> , Paweł Dubiel
P5	<b>SEISMIC IMAGE OF THE OUTER CARPATHIANS DEEP STRUCTURE IN VICINITY OF THE MSZANA DOLNA TECTONIC WINDOW</b> <b>Paweł Marzec</b> , Jan Golonka, Kaja Pietsch
P6	<b>THREE-DIMENSIONAL GRAVITY INVERSION FOR DEPTH-TO-BASEMENT – A CASE STUDY FROM THE WESTERN PART OF THE POLISH OUTER CARPATHIANS</b> <b>Mateusz Mikołajczak</b> , Stanisław Mazur, Jan Barmuta, Krzysztof Starzec
P7	<b>INTEGRATED GEOLOGICAL AND GEOPHYSICAL DATA TO PREDICT MIOCENE DEPOSITIONAL ENVIRONMENT EVOLUTION IN THE NORTHERN PART OF SONG HONG BASIN, VIETNAM</b> <b>Ha Quang Man</b> , Bui Viet Dung, Nguyen Van Kieu, Vu Minh Hang
P8	<b>APPLICATION OF ERT TO RECOGNISE THE GEOLOGICAL STRUCTURE OF CLIFFS LOCALISED IN SKALNY POTOK (HRUBÝ JESENÍK MTS.)</b> <b>Iwona Stan-Kleczek</b> , Dominika Stan
P9	<b>INFLUENCE OF UPPER SILESIA COAL BASIN TECTONICS ON SEISMIC HAZARD ASSESSMENT</b> <b>Agnieszka Braclawska</b>
P10	<b>APPLICATION OF ELECTROMAGNETIC TRANSIENT METHOD FOR Zn-Pb EXPLORATION AT THE CHO DIEN – CHO DON DISTRICT, BAC CAN PROVINCE, NORTH VIETNAM</b> <b>Chau Nguyen Dinh</b> , Wojciech Klityński, Szymon Oryński, Pham Nguyen Phu
P11	<b>CORRELATION OF SELECTED SOIL TYPES AGROTECHNICAL PROPERTIES WITH CORRESPONDING GPR RESPONSE</b> <b>Akinniyi Akinsunmade</b> , Sylwia Tomecka-Suchoń, Paweł Pysz
P12	<b>FINITE DIFFERENCE TIME DOMAIN (FDTD) MODELLING OF GROUND PENETRATING RADAR PULSE ENERGY FOR LOCATING BURIAL SITES</b> <b>Akinniyi Akinsunmade</b> , <b>Jerzy Karczewski</b> , Ewelina Mazurkiewicz, Sylwia Tomecka-Suchoń

P13	<p><b>APPLICATION OF THE CONDUCTIVE METHOD IN THE ENGINEERING GEOLOGY - RUCZAJ DISTRICT IN KRAKÓW, POLAND AS A CASE STUDY</b></p> <p>Wojciech Klityński, <b>Szymon Oryński</b>, Chau Nguyen Dinh</p>
P14	<p><b>GEOPHYSICAL AND GEOTECHNICAL APPROACH TO A LANDSLIDE STABILITY ASSESSMENT – A CASE STUDY</b></p> <p><b>Bernadetta Pasierb</b>, Michał Grodecki, Rafał Gwóźdź</p>
P15	<p><b>JOINT INVERSION OF SEISMIC AND GRAVITY DATA AS TOOL FOR IMPROVING OF SEISMIC STATIC CORRECTION ESTIMATION. EXAMPLE FROM POLISH LOWLAND – A REGIONAL AGH3 SEISMIC PROFILE</b></p> <p><b>Adam Cygal</b>, Michał Stefaniuk, Jolanta Pilch, Tomasz Maćkowski</p>
P16	<p><b>COMPARISON OF HIGH-RESOLUTION AUDIO-MAGNETOTELLURIC AND TRANSIENT ELECTROMAGNETIC DATA VERUS INTERPRETATION OF SHALLOW 2D SEISMICREFLECTION DATA. EXAMPLE FROM THE LUBLIN BASIN</b></p> <p>Adam Cygal, Jolanta Pilch, <b>Michał Stefaniuk</b>, Marek Sada, Krzysztof Dzwiniel</p>
P17	<p><b>APPLICATION OF ARTIFICIAL NEURAL NETWORKS TO DEVELOP INPUT DATA FOR ACOUSTIC AND ELASTIC INVERSION IN THE WYSIN 1 WELL AND FOR PART OF THE WYSIN-3D SEISMIC IMAGE</b></p> <p><b>Jakub Ważny</b>, Adam Cygal, Michał Stefaniuk</p>
P18	<p><b>MULTIVARIATE INTERPRETATION GEOPHYSICAL DATA FOR EVALUATION OF GEOTECHNICAL CONDITION OF PART EMBANKMENT VISTULA RIVER</b></p> <p><b>Adam Cygal</b>, Aleksandra Borecka, Michał Stefaniuk, Marek Sada, Jakub Ważny</p>
P19	<p><b>TESTING METHODOLOGY OF ACQUISITION PARAMETERS OF 3D HIGH DENSE SEISMIC TO INVESTIGATE LOWER PALEOZOIC SEDIMENTS FOR THE DETECTION OF UNCONVENTIONAL GAS DEPOSITS – WIERZBICA AGH 3D PROJECT</b></p> <p>Krzysztof Pieniądz, Piotr Misiaczek, Sylwia Łabaj, Leszek Smolarski, Krzysztof Dzwiniel, Tomasz Maćkowski, <b>Michał Stefaniuk</b></p>
P20	<p><b>APPLICATION OF SEISMIC TO STUDY GAS HYDRATE IN VIETNAM</b></p> <p>Tung Nguyen, <b>Huong Phan</b>, Mai Le,</p>
P21	<p><b>ROCK PHYSICS MODELLING FOR DETERMINATION OF EFFECTIVE ELASTIC PROPERTIES OF THE LOWER PALEOZOIC SHALE FORMATION, NORTH POLAND</b></p> <p><b>Kamila Wawrzyniak-Guz</b></p>
P22	<p><b>DETAILED PARAMETRIZATION OF THE PORE SPACE IN TIGHT CLASTIC ROCKS FROM POLAND BASED ON LABORATORY MEASUREMENT RESULTS</b></p> <p><b>Paulina I. Krakowska</b></p>
P23	<p><b>NEW APPLICATION FOR THE TOTAL ORGANIC CARBON ESTIMATION BASED ON WELL LOGS</b></p> <p>Paulina I. Krakowska, <b>Sebastian Waszkiewicz</b>, Jerzy Karczewski, Jadwiga A. Jarzyna, Edyta Puskarczyk, Kamila Wawrzyniak-Guz, Stanisław Baudzis</p>
P24	<p><b>GEO LAB LOG PLATFORM (GLLP) AS A TOOL FOR NMR AND MICP RESULTS JOINT INTERPRETATION</b></p> <p><b>Edyta Puskarczyk</b>, Paulina Krakowska, Artur Krzyżak, Krzysztof Janc</p>
P25	<p><b>DUAL ENERGY COMPUTED TOMOGRAPHY (DECT) APPLICATION IN ROCK CORE EXAMINATION</b></p> <p><b>Marek Dohnalik</b>, Paulina I. Krakowska, Edyta Puskarczyk, Katarzyna Drabik</p>

P26	<b>IMPROVED RECOGNITION OF ROCK FORMATION ON THE BASIS OF WELL LOGGING AND LABORATORY EXPERIMENTS RESULTS USING FACTOR ANALYSIS</b> Edyta Puskarczyk, <b>Jadwiga A. Jarzyna</b> , Paulina I. Krakowska, Kamila Wawrzyniak-Guz, Marcin Zych
P27	<b>MAGNETIC PROPERTIES OF SOILS UNDER HIGH ANTHROPOPRESSION – KRAKOW CITY, SOUTHERN POLAND</b> Anna Wojas
P28	<b>INVESTIGATING THE CHARACTERISTICS OF THE STRUCTURE AND STRATIGRAPHY OF TU CHINH-VUNG MAY BASIN IN CENOZOI, EAST VIETNAM SEA BY MULTI-SEISMIC AND GRAVITY DATA</b> <b>Hang Pham Thi Thu</b> , Trung Nguyen Nhu, Huong Nguyen Thi Thu, Phuong Trieu Viet
P29	<b>COMPARATIVE GEOCHEMICAL AND PYROLYTIC STUDY OF COALS, ASSOCIATED KEROGENS, AND ISOLATED MACERALS</b> Laura Zieger, Ralf Littke, Christoph Hartkopf-Fröder
P30	<b>SURFACE GEOCHEMISTRY IN OIL AND GAS EXPLORATION - CASE STUDIES FROM PETROLEUM PROVINCES OF POLAND</b> Henryk Sechman, Piotr Guzy, Anna Twaróg, Adrianna Góra
P31	<b>GEOCHEMICAL CHARACTERISTICS OF COAL WASTES ORGANIC MATTER FROM TWO PARTS OF UPPER SILESIA COAL BASIN (POLAND)</b> Monika Fabiańska, Ewa Szram, Magdalena Misz-Kennan, Justyna Ciesielczuk, Dariusz Więclaw
P32	<b>TIME SERIES ANALYSIS IN THE ASSESSMENT OF CURATIVE CHARACTER OF WATER</b> Katarzyna Wątor, Joanna Karłowska-Pik
P33	<b>MINERALOGICAL AND GEOCHEMICAL STUDIES OF SECONDARY MINERAL ASSEMBLAGES RELATED TO DETERIORATION OF BUILDING MATERIALS</b> Mariola Marszałek, Krzysztof Dudek, Adam Gawel, Jerzy Czerny
P34	<b>CO<sub>2</sub> SEQUESTRATION IN COAL SEAMS – POSSIBILITY OR CURIOSITY</b> Grzegorz Jodłowski, Marta Wójcik
P35	<b>THE ACCURACY OF THE ASSESSMENT OF THE VOLUMETRIC DENSITY OF Cu-Ag LGCD ORE DEPOSITS AND ITS EFFECT ON THE VALUATION OF MINING PRODUCTION</b> Jacek Mucha, <b>Monika Wasilewska-Błaszczuk</b>
P36	<b>THE MINERALOGICAL AND PETROGRAPHIC CHARACTERISTIC OF THE JURASSIC AQUIFER IN THE MOGILNO-ŁÓDŹ TROUGH</b> Barbara Tomaszewska, Aleksandra Kasztelewicz
P37	<b>PETROGRAPHIC COMPOSITION OF CHAR FROM THE GASIFICATION OF COAL FROM THE WIECZOREK MINE AFTER COMBUSTION</b> Natalia Maciejończyk, <b>Barbara Bielowicz</b>
P38	<b>withdrawn</b>
P39	<b>CO<sub>2</sub> SORPTION PROPERTIES OF THE SELECTED LITHOTYPES OF LIGNITE FROM POLISH DEPOSITS</b> Barbara Bielowicz, Paweł Baran
P40	<b>DEEP TECTONICS OF THE CENTRAL CARPATHIAN DEPRESSION (SE POLAND): EXAMPLES OF GEOLOGICAL REINTERPRETATION OF MAGNETOTELLURIC SOUNDINGS AND SEISMIC PROFILES</b> Jan Kuśmierk, Urszula Baran, <b>Grzegorz Machowski</b>

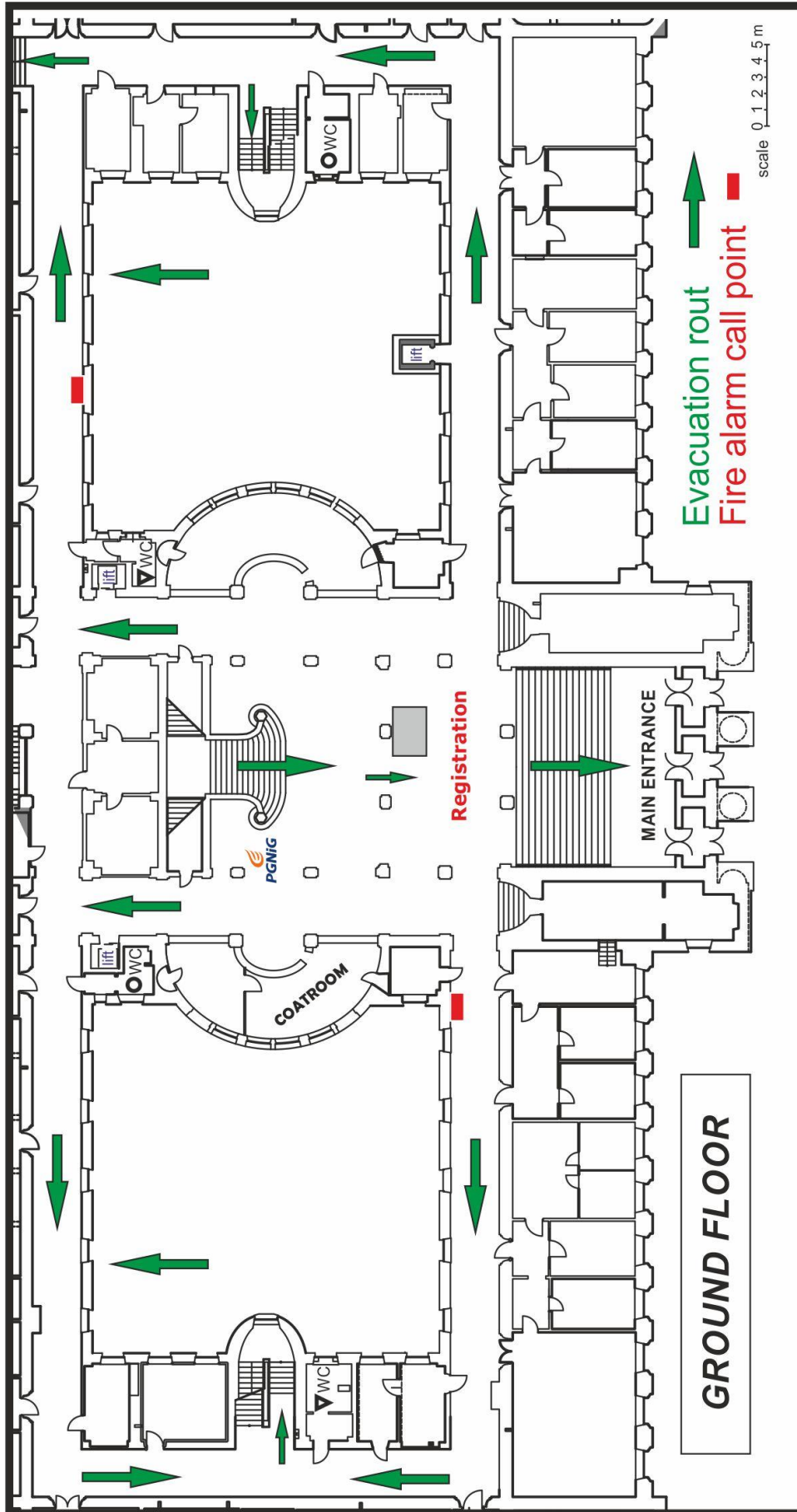
P41	<b>RESOURCE POTENTIAL OF WASTE MATERIALS FROM POLISH COPPER ORE PROCESSING CHAIN</b> Bartosz Mikoda, Harry Kucha, Anna Potysz
P42	<b>LA-ICP-MS STUDY OF TRACE ELEMENTS IN SPHALERITE AND CHALCOPYRITE FROM THE GIERCZYN MINE, POLAND</b> Krzysztof Foltyn, Adam Piestrzyński, Viktor Bertrandsson Erlandsson, Frank Melcher
P43	<b>PRELIMINARY LONG-TERM PREDICTIVE MODELLING RESERVES OF GROUNDWATER RESOURCES IN VIEW OF CLIMATE CHANGE - A CASE STUDY FROM EASTERN POLAND</b> Robert Duda, Justyna Stanek
P44	<b>SORPTION AND KINETICS OF Eu(III) ON BENTONITE/PHYLLITE BARRIERS</b> Joanna Kyzioł-Komosińska, Monika Fabiańska, Janusz Janeczek
P45	<b>HYDROGEOCHEMICAL CHARACTERISTIC OF GROUNDWATER IN THE TURKANA COUNTY (AFRICA)</b> Piotr Rusiniak, Klaudia Sekuła, Katarzyna Wątor, Piotr Stopa
P46	<b>EDUCATION AND RESEARCH IN THE FIELD OF GEOTHERMAL HEAT PUMPS IN THE CENTRE OF SUSTAINABLE DEVELOPMENT AND ENERGY SAVINGS WGGIOS AGH IN MIĘKINIA</b> Jarosław Kotyza, Elżbieta Hałaj, Wojciech Luboń, Grzegorz Pełka, Wojciech Górecki, Anna Sowizdzał, Dominika Dawiec
P47	<b>EVALUATION OF THE POSSIBILITY OF USING RENEWABLE ENERGY SOURCES TO IMPROVE AIR QUALITY STANDARDS</b> Aleksandra Szulc, Barbara Tomaszewska
P48	<b>THE ENERGY POTENTIAL OF AUTOCHTHONOUS MIOCENE RESERVOIR IN THE EASTERN PART OF THE CARPATHIAN FOREDEEP - GEOTHERMAL RESEARCH IN THE PETROLEUM PROVINCE</b> Anna Sowizdzał, Anna Chmielowska, Barbara Tomaszewska
P49	<b>SEISMIC RESERVOIR CHARACTERIZATION FOR RECOGNITION OF GEOTHERMAL PARAMETERS</b> Anna Wachowicz-Pyzik, Anna Sowizdzał, Tomasz Maćkowski, Michał Stefaniuk
P50	<b>MINERALOGICAL CHARACTERISTICS OF Cu-Ag FROM KYAUKSE SABE TAUNG COPPER DEPOSIT, SHAN PLATEAU, MYANMAR</b> Aung Myo Thu, Adam Piestrzyński, Krzysztof Foltyn
P51	<b>ESTIMATION OF THE QUALITY FACTOR BASED ON THE MICROSEISMICITY RECORDINGS FROM NORTHERN POLAND</b> Paweł Wandycz, Eryk Święch, Leo Eisner, Andrzej Pasternacki, Miłosz Wcisło, Tomasz Maćkowski
P52	<b>A PORE PRESSURE PROFILING IN SIERCZA LANDSLIDE COLLUVIUM IN THE CARPATHIAN FLYSCH USING CPTU</b> Jacek Stanisław, Zenon Pilecki
P53	<b>THERMAL PROPERTIES DEPENDENCE OF BOREHOLE HEAT EXCHANGERS FOR HEAT PUMPS ON GROUTING MATERIAL</b> Grzegorz Pełka, Wojciech Luboń, Daniel Malik
10.00–10.20	<i>Coffee break</i>

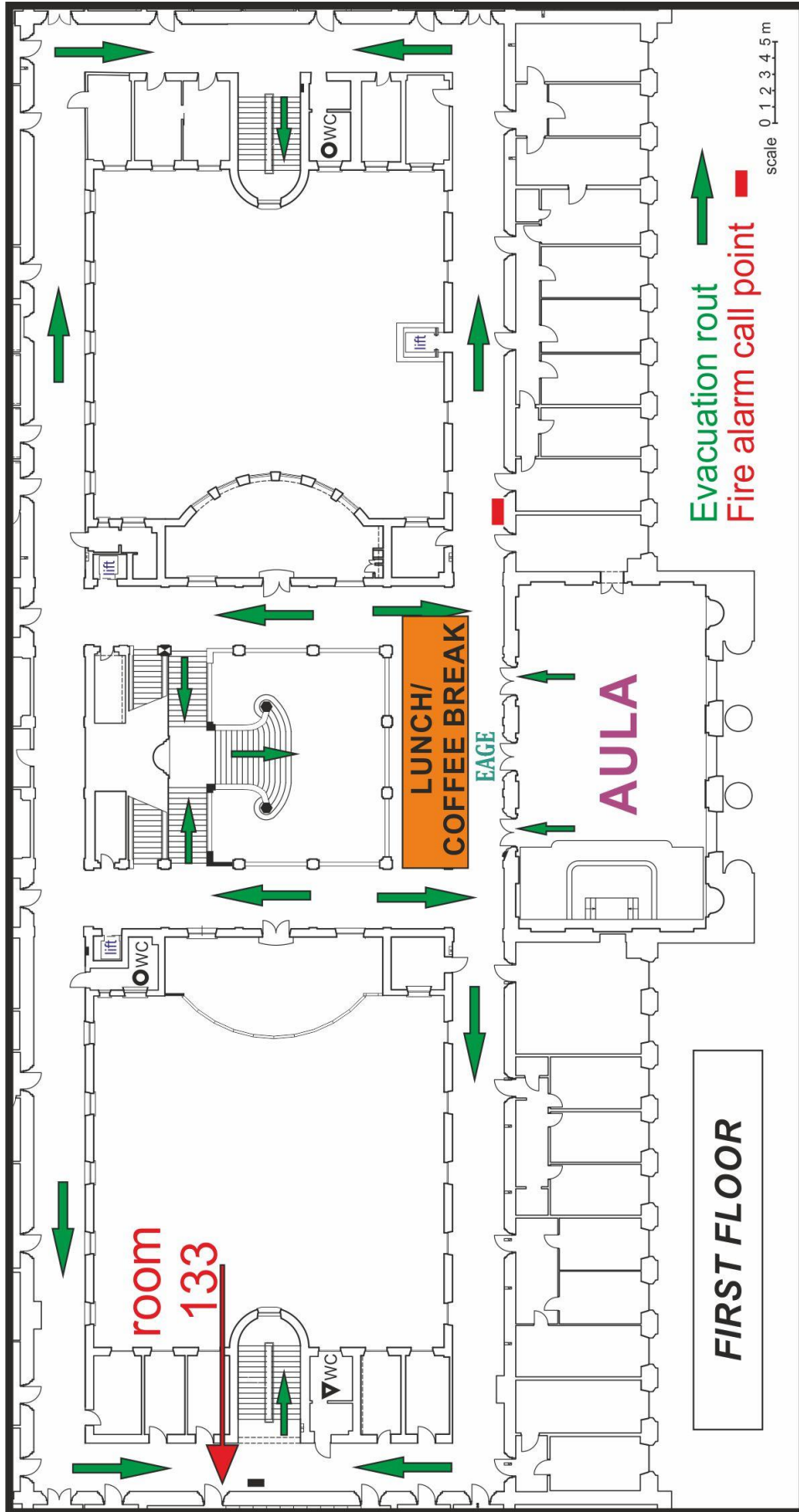
## 10.20–13.00 Student session – Blg. A-0, AULA

<p><i>In Chair: prof. Jadwiga Jarzyna</i>  <i>prof. Huong Phan Thien</i>  <i>prof. Michal Malinowski</i></p>	
10.20–10.40	<p><b>PETROPHYSICAL ROCK TYPING AND PERMEABILITY PREDICTION IN TIGHT SANDSTONE RESERVOIR</b></p> <p>Anita Lis-Śledziona</p>
10.40–11.00	<p><b>USING WELL LOGGING INTERPRETATION METHODOLOGY FOR DETERMINATION THE FRACTURE SYSTEM PROPERTIES FOR CARBONATE FORMATION</b></p> <p>Marek Stadtmüller</p>
11.00–11.20	<p><b>ITERATIVE INVERSION OF DUAL INDUCTION TOOL LOGS FROM THE THIN-BEDDED SANDY-SHALY FORMATION IN THE CARPATHIAN FOREDEEP USING MODIFIED SIMULATED ANNEALING METHOD</b></p> <p>Michał Wilkosz, Kamila Wawrzyniak-Guz</p>
11.20–11.40	<p><b>INTERPRETATION METHODOLOGY OF RESISTIVITY LOGS IN GRONINGEN CONDITION</b></p> <p>Stanisław Baudzis, Jadwiga Jarzyna</p>
11.40–12.00	<p><i>Coffee break</i></p>
12:00-12:20	<p><b>THE USE OF DIP GUIDED FILTERING AND BEAM PARTITIONED ANALYSIS FOR ADVANCED SEISMIC STRUCTURE ENHANCING PROCESSING</b></p> <p>Mateusz Zaręba, Anna Laskownicka, Jerzy Zając</p>
12.20–12.40	<p><b>ARCHIVAL GAMMA RAY LOGS STANDARDIZATION BY NON-DESTRUCTIVE CORE LOGGING OF THE LOW-RADIOACTIVITY ROCKS</b></p> <p>Rafał Skupio, Benedykt Kubik, Krzysztof Wolański</p>
12.40–13.00	<p><b>ESTIMATION OF PERMEABILITY USING ARTIFICIAL NEURAL NETWORKS (MULTILAYER PERCEPTRONS)</b></p> <p>Sebastian Waszkiewicz, Paulina Krakowska, Edyta Puskarczyk</p>

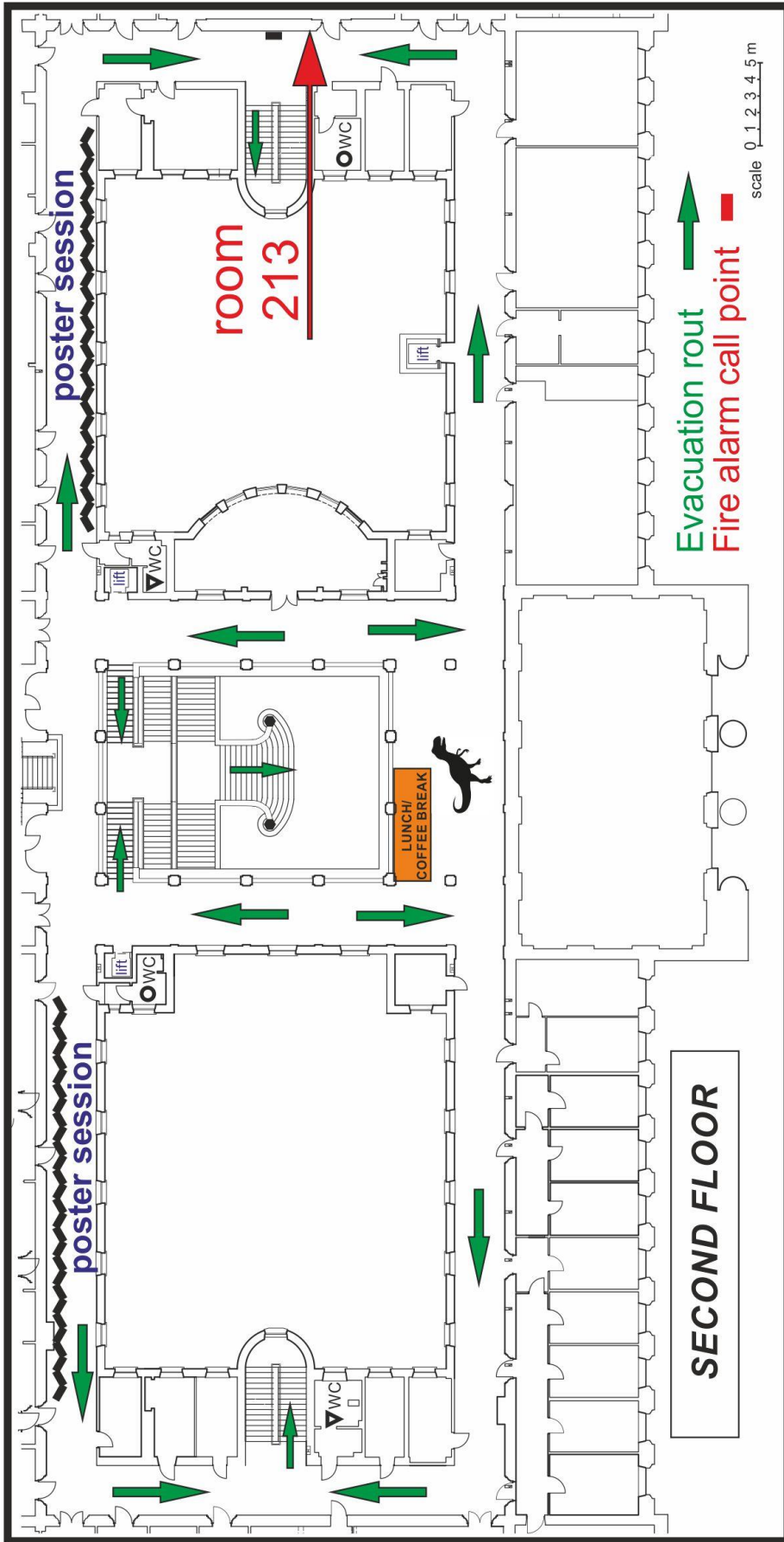
## 13.00 Closing ceremony – Blg. A-0, AULA

FLOOR PLAN of A-0 BUILDING

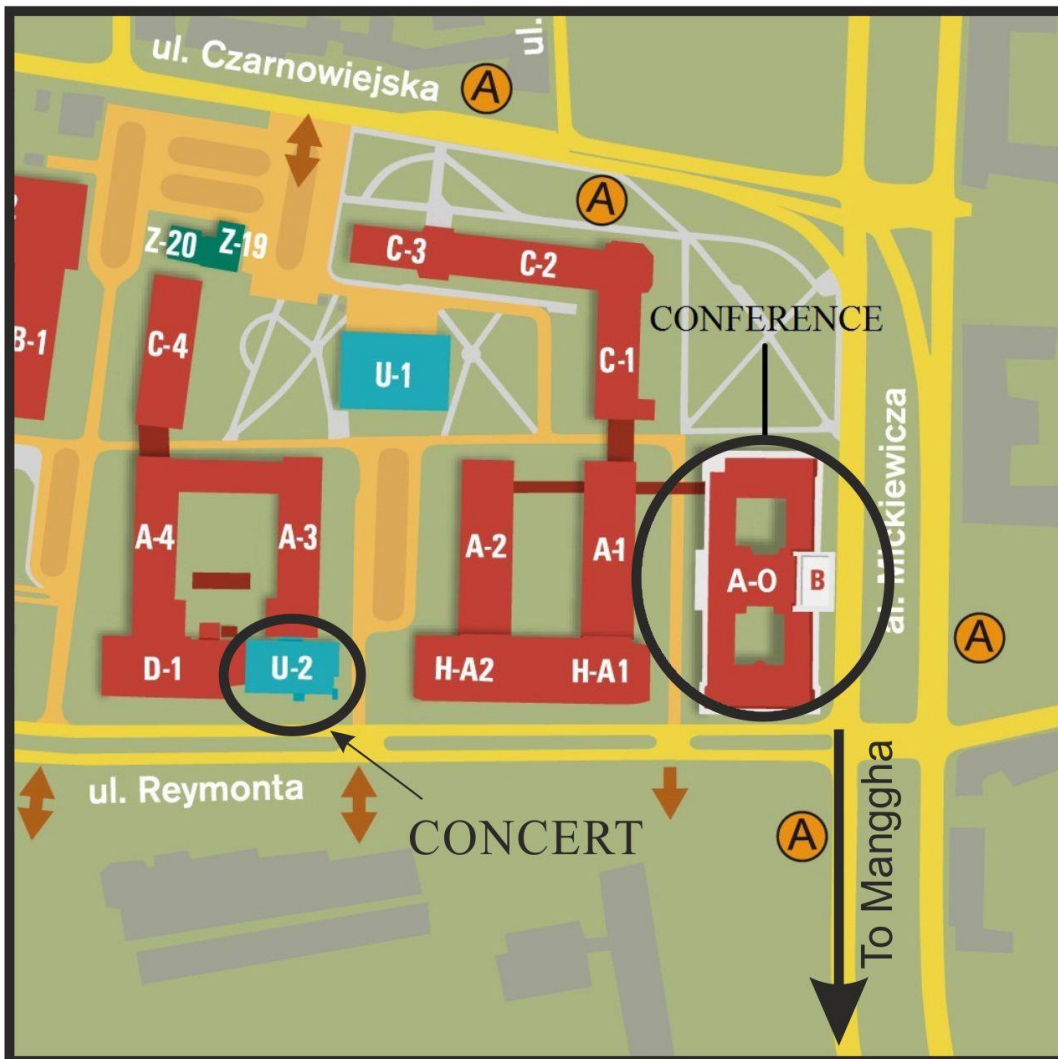








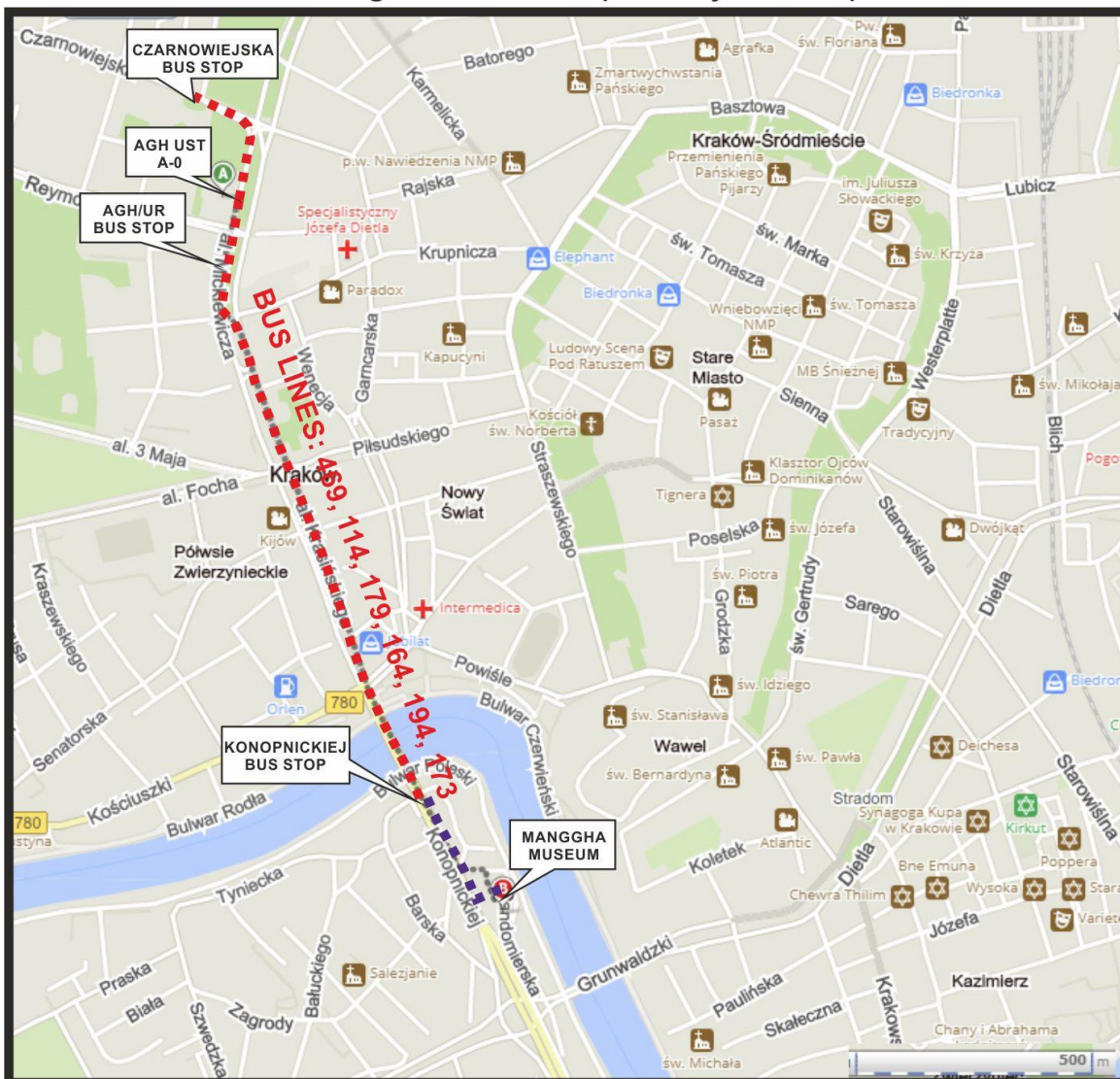
# Concert of the AGH-UST Representative Orchestra



U-2 Building  
Credit:mapio.net

# How to get to Manggha Museum?

Take a bus 469, 114, 179, 164, 194, 164 or 173 from AGH/UR bus stop or 114, 194, or 173 from Czarnowiejska bus stop and get off at Konopnickiej bus stop



For more hints:



Manggha Museum Credit: fotopolska.eu

# SAFETY INSTRUCTION



## **Any person discovering a fire should:**

1. Keep calm.
2. Dial 112 to call fire brigade
3. Sound the alarm. Press the button.



4. Inform organiser:
  - o Tel.: 698 596 537
  - o Registration desk
5. Go to the nearest Fire Exit

## **On hearing the fire alarm:**

1. Leave the building by Fire Exit routes displayed (building plan on the next page)
2. Close all doors behind you
3. Report to assembly point out of building

## **Remember!**

- **Do not take risks**
- **Do not return to the building for any reason until authorised to do so**
- **Do not use lifts !**



For first aid:

1. Call for organiser:
  - o Tel.: 698-596-537
  - o Registration desk
2. Dial 112 to call ambulance service